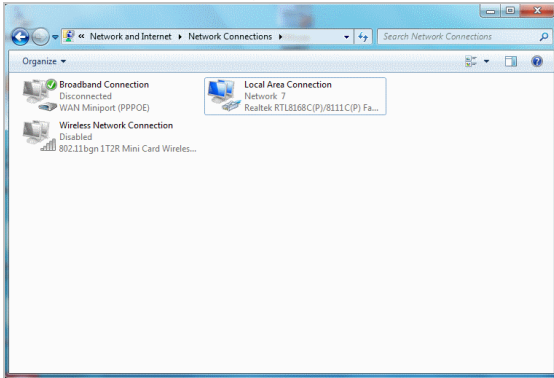
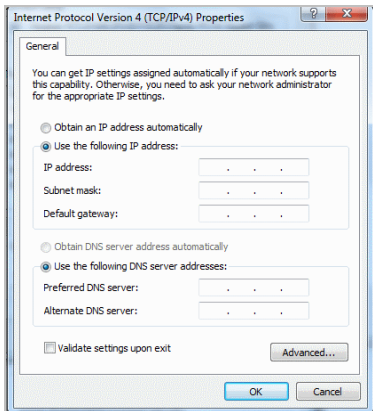
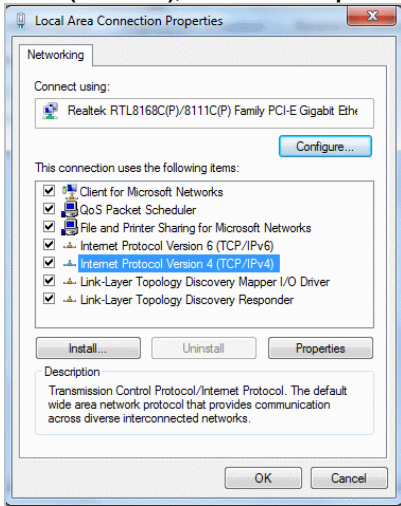


**Step 1 :** Click Start→Setting→Control Panel. Click on the Network Connection window, then Local Area Connection.

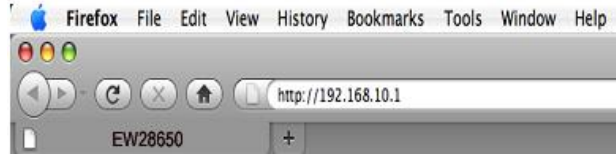


**Step 2 :** In the Local Area Connection Properties window, select Internet Protocol (TCP/IPv4); click on the Properties button.



*Example:*  
**IP Address:**  
 192.168.10.5  
**Subnet Mask:**  
 255.255.255.0

**Step 3 :** Launch your browser, and then enter the factory default IP address 192.168.10.1 into your browser's (URL) location box. Press Enter.



**Step 4 :** The EW28650 login screen will appear. In the Username and Password field, type the factory default username admin and password admin, and click Submit. The EW28650 login screen will appear.



**Note:** It is important to remember your password. If for any reason you lose or forget your password, press the reset button located on the top of the device. Reset action will re-initialize the settings. All configurations, including username, password and IP address(es), will be reset, and requires re-entering.

### FCC Regulatory Statement

Part 15-Class B compliant device  
 This device complies with Part 15 of the FCC Rules. Operation is subject to the following conditions:

1. This device may not cause harmful interference, and
2. This device must accept any interference received, including that which may cause undesired operation.

This equipment has been test and found to comply with the limits for a computing device, pursuant to Part 15 of the FCC Rules. These limits are designed to provide reasonable protection against harmful interference when the equipment is operated in a commercial environment. This equipment generates, uses, and can radiate radio frequency energy and, if not installed and used in accordance with the instructions, may cause harmful interference to radio communications. However, there is no guarantee that interference will not occur in a particular installation. If this equipment does cause harmful interference to radio or television reception, which can be determined by turning the equipment off and on, the user is encouraged to try to correct the interference by one or more of the following measures:

1. Reorient or relocate the receiving antenna.
2. Increase the separation between the equipment and receiver.
3. The equipment and the receiver should be connected the outlets on separate circuits.
4. Consult the dealer or an experienced radio/television technician for help.

Changes or modification not expressly approved by the party responsible for compliance could void the user's authority to operate the equipment.

EW28650

# IEEE 802.11n

## In-Wall Access Point

### EW28650

## Quick Installation Guide



## Package Contents

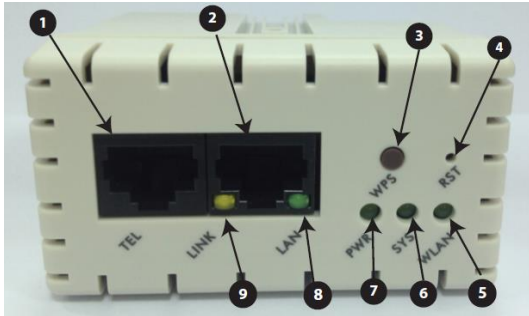
Please inspect your package. The following items should be included:

- One In-wall Access Point
- One Wall Faceplate (Top and Bottom)
- One Mounting Bracket
- One Quick Installation Guide
- One CD

If any of the above items are damaged or missing, please contact your dealer immediately.

## Overview

1. RJ-45 Telephone Connector (Transparent)
2. RJ-45 Ethernet Connector
3. WPS Button
4. Reset Button
5. WLAN
6. SYSTEM
7. POWER
8. LAN
9. LINK
10. RJ-45 Ethernet Connector (802.3af PoE)
11. RJ-45 Telephone Connector (Transparent)



EW28650 Front Panel



EW28650 Rear Panel

## LED Indicators

LED	State	Description
PWR	Off	The In-wall access point is not receiving electrical power.
	Green	The In-wall access point is receiving electrical power.
SYS	Off	The In-wall access point status is defective.
	Green	The In-wall access point status is complete.
	Green (Blinking)	During the firmware upgrades, the system's LED will blink.
LINK/ WAN	Off	Port has not established any network connection.
	Yellow	A port has established a valid 10/100Mbps network connection.
LAN	Off	Port has not established any network connection.
	Green	A port has established a valid 10/100Mbps network connection.
	Green (Blinking)	10/100Mbps traffic is traversing the port.
WLAN	Off	The wireless is not ready.
	Green	The In-wall access point has established a valid wireless connection.
	Green (Blinking)	The wireless connection is active.

## Hardware Installation

**Step 1 :** Slide the bottom faceplate with bracket to align with screw holes on the EW28650, and fasten tightly into the bottom faceplate until it's flush to the wall.



**Step 2 :** Line-up and push the top faceplate onto bottom faceplate until it snaps securely into place.



## Software Configuration

The EW28650 supports web-based configuration. Upon completion of the hardware installation, it can be configured through a web browser such as Internet Explorer, Firefox, or Safari.

**Note:** Set the IP segment of the administrator's computer to the same range as the EW28650 for accessing the system. **Do not duplicate** the IP address used here with the IP address of the EW28650 or any other device within the network.

- **Default IP Address:** 192.168.10.1
- **Default Subnet Mask:** 255.255.255.0
- **Default Username and Password:** admin/admin